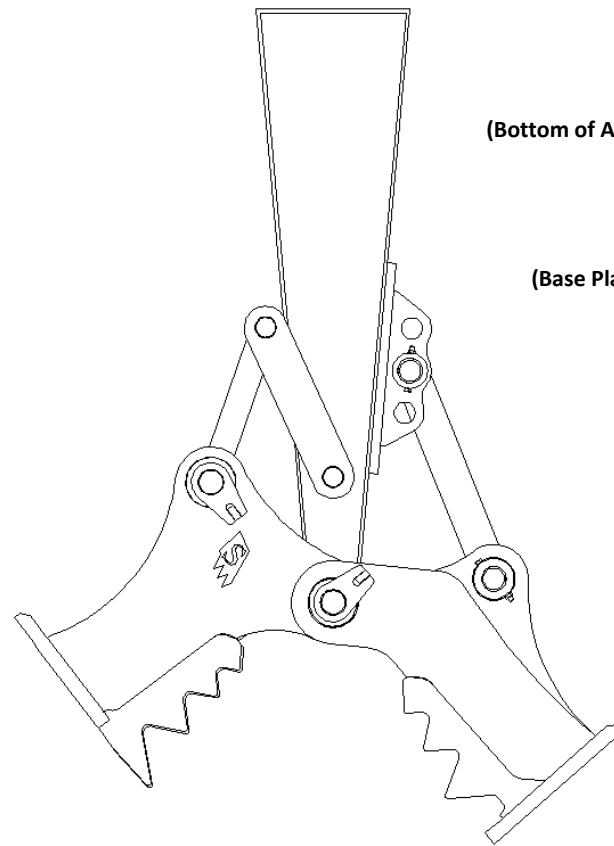


SECC CONCRETE CRUSHER

Phone: (800) 419-8090 Fax: (770) 947-9916

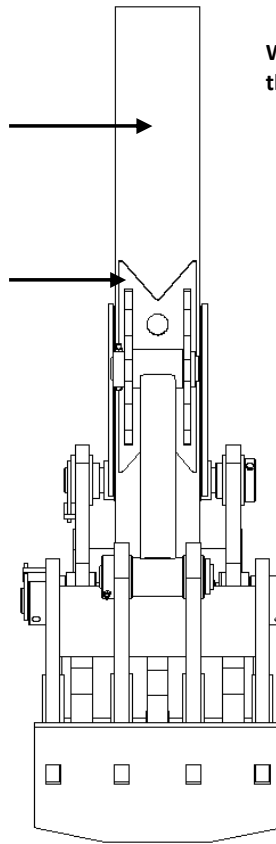
Installation:

1. Mount crusher at the end of the boom arm in place of bucket. Install pins, locks, seals and spacers (if needed). Next, pin the curling link in some manner.
2. Pin the stabilizer arm to rear hole in base plate and to *stationary* blade of crusher.
3. With boom raised, fold stick toward the cab and let the stabilizer arm bracket rest on the bottom of the stick. Rotate both the *stationary* blade and the *rotation* blade toward the cab until blades are approximately 90 degrees from stick.
4. Make sure bottom of the base plate is flat against the stick and centered from side to side. Once base plate is in the correct position, tack it and weld in place as per drawing. (**NOTE:** Welding "ground" clamp **MUST** be directly connected to area that is being welded in order to keep the seals from being damaged!)
5. With all pins and locks in place, grease all bosses and pins. Next, rotate the *rotation* blade open and closed to make sure there is no binding anywhere during operation.
6. After installation is complete, the operator will have to use the *stationary* blade in all pinned positions in order to find the proper stabilizer adjustment.



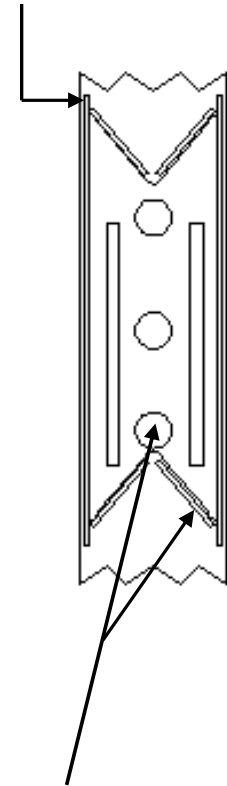
(Bottom of Arm) →

(Base Plate) →



Pig Tail Welds:

Weld 1 ½" from the end of the plate on all four corners.



As Per Drawing:

Weld ¾" welds around outside of plate as well as around inside of holes.

Maintenance:

- Grease appropriate parts every 8 hours of operation.
- Keep replaceable teeth sharpened.
- Teeth should be replaced when tips wear back 1".

Failure to perform these functions will decrease machine's crushing force and overall performance of the crusher!